

4865250Y

4866000Y

4866750Y

648750X

649500X

Bogdan-Secian

784

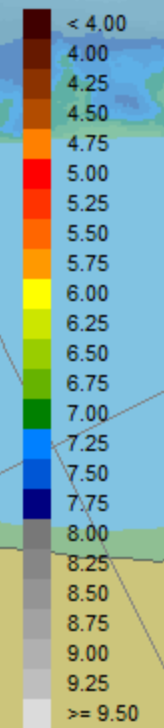
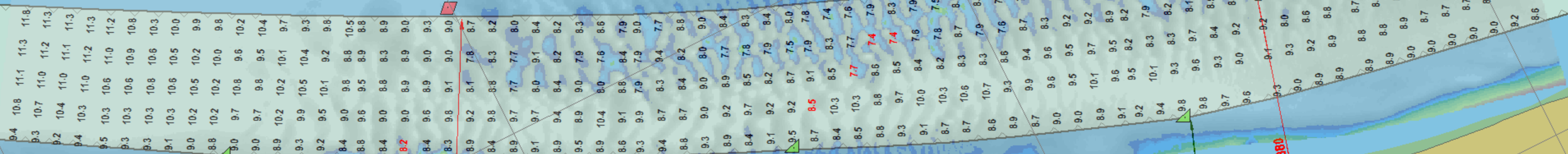


648750X

4864500Y

650250X

4866750Y





649500X

4864500Y

4865250Y

650250X


 Administratia Fluviala a Dunarii de Jos - Galati, Romania  
 S.C.N. Giurgiu - Biroul Hidrotehnic, Harta Electronica  
 Sondaj de control Dunarea Fluviala, efectuat de nava Donaris 3  
**Zona Bogdan Km 783+00 - Km 785+50**


Adancimi minime efective Cota **+ 518 cm**  
 Mira referinta: Calafat

EV	IV	C	IR	ER
8.2	8.5	7.7	7.4	7.3

Scara 1:5000    LATIME MIN. 200 m / km 784+00    Data: 17.04.2018